



**Australian
Bureau of
Statistics**

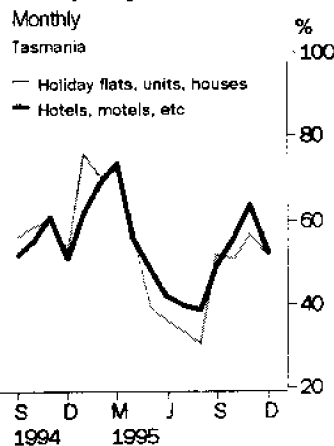
TOURIST ACCOMMODATION

TASMANIA

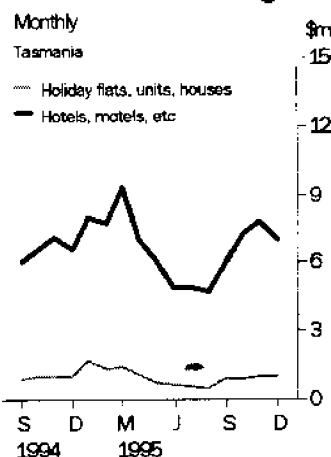
EMBARGOED UNTIL 11:30AM WED 20 MARCH 1996

DECEMBER QTR KEY FIGURES

Occupancy rates



Accommodation takings



	Dec 94	Dec 95	change
Hotels, Motels and Guest Houses			
Rooms available (No.)	5 354	5 503	2.8 %
Room occupancy rate (%)	55.4	57.0	1.6 pts
Takings from accommodation (\$'000)	20 159	22 090	9.6 %
Holiday Flats, Units and Houses			
Units, etc. available (No.)	816	830	1.7 %
Unit occupancy rate (%)	57.0	52.8	-4.2 pts
Takings from accommodation (\$'000)	3 036	2 958	-2.6 %
Caravan Parks			
Sites, cabins, etc. available (No.)	6 953	6 440	-7.4 %
Site occupancy rate (%)	30.4	33.2	2.8 pts
Takings from accommodation (\$'000)	1 818	1 923	5.8 %
Visitor Hostels			
Bed spaces available (No.)	1 813	1 719	-5.2 %
Bed occupancy rate (%)	17.1	18.8	1.7 pts
Takings from accommodation (\$'000)	377	361	-4.2 %

DECEMBER QTR KEY POINTS

DEMAND HIGH FOR HOTEL/MOTEL ACCOMMODATION

- Room nights occupied in hotels, motels and guest houses with facilities increased by 6% in December quarter 1995 compared with December quarter 1994, while capacity available rose by 2.8%. The average room occupancy rate thus rose by 1.6 percentage points to 57.0%, which was the highest December quarter result since 1985.
- Accommodation demand increased also for caravan parks and for visitor hostels resulting in occupancy rate increases. For holiday flats, units and houses, however, available capacity increased by 1.7% between December quarter 1994 and December quarter 1995, but unit nights occupied fell resulting in a drop in the unit occupancy rate from 57.0% to 52.8%.

TAKINGS FROM ACCOMMODATION

- Average takings per room night occupied in hotels, motels and guest houses increased from \$74 in December quarter 1994 to \$76 in December quarter 1995. For holiday flats, units and houses, average takings per unit night occupied increased from \$71 to \$73, while for caravan parks there was an increase in average takings per site night from \$9 to \$10.
- For visitor hostels, average takings per guest night decreased from \$13 to \$12.

INQUIRIES

- For further information about these and related statistics, contact Richard Bellchambers on 07 3222 6152, or any ABS Office.

NOTES

FORTHCOMING ISSUES

ISSUE (Quarter)

EXPECTED RELEASE DATE

March 1996

20 June 1996

.....

CHANGES IN THIS ISSUE

There are no changes in this issue.

.....

Denis W. Rogers

Acting Deputy Commonwealth Statistician

TABLE 1 — SUMMARY OF HOTELS, MOTELS AND GUEST HOUSES WITH FACILITIES, TASMANIA

Particulars	Unit	Quarter ended				Year ended			
		September 1994	December 1994	March 1995	June 1995	September 1995	December 1995	December 1994	December 1995
LICENSED HOTELS WITH FACILITIES									
Establishments	No.	91	92	91	92	92	92
Guest rooms	No.	3,513	3,526	3,511	3,545	3,566	3,566
Bed spaces	No.	9,856	9,921	9,908	9,932	9,946	9,911
Employment (persons)	No.	3,474	3,576	3,500	3,403	3,445	3,772
Room nights occupied	No.	145,246	177,580	209,797	157,516	140,180	186,265	692,560	693,758
Room occupancy rate	per cent	45.0	54.9	66.4	48.8	42.7	56.8	54.2	53.6
Guest nights	No.	239,577	302,266	367,621	261,030	228,065	309,095	1,176,347	1,165,811
Bed occupancy rate	per cent	26.4	33.2	41.2	28.9	24.9	33.9	32.5	32.2
Guest arrivals	No.	125,155	170,077	204,917	139,779	120,236	166,013	640,620	630,945
Average length of stay	days	1.9	1.8	1.8	1.9	1.9	1.9	1.8	1.8
Takings from accommodation	\$'000	11,109	14,188	16,898	12,719	11,026	15,252	53,726	55,895
MOTELS AND GUEST HOUSES WITH FACILITIES									
Establishments	No.	83	85	86	87	87	88
Guest rooms	No.	1,803	1,828	1,869	1,863	1,886	1,937
Bed spaces	No.	5,550	5,674	5,780	5,767	5,781	5,981
Employment (persons)	No.	747	815	856	749	777	874
Room nights occupied	No.	67,209	94,786	120,509	80,573	70,947	102,522	358,026	374,551
Room occupancy rate	per cent	40.6	56.4	71.6	47.6	40.9	57.5	53.7	54.4
Guest nights	No.	122,573	175,667	235,646	148,175	130,033	187,096	669,897	700,950
Bed occupancy rate	per cent	24.0	33.7	45.3	28.3	24.5	34.0	32.6	33.0
Guest arrivals	No.	69,307	105,336	135,180	89,147	74,128	106,934	383,555	405,389
Average length of stay	days	1.8	1.7	1.7	1.7	1.8	1.7	1.7	1.7
Takings from accommodation	\$'000	4,120	5,971	8,064	5,235	4,475	6,838	22,273	24,613
TOTAL HOTELS, MOTELS AND GUEST HOUSES WITH FACILITIES									
Establishments	No.	174	177	177	179	179	180
Guest rooms	No.	5,316	5,354	5,380	5,408	5,452	5,503
Bed spaces	No.	15,406	15,595	15,688	15,699	15,727	15,892
Employment (persons)	No.	4,221	4,391	4,356	4,152	4,222	4,646
Room nights occupied	No.	212,455	272,366	330,306	238,089	211,127	288,787	1,050,586	1,068,309
Room occupancy rate	per cent	43.5	55.4	68.2	48.4	42.1	57.0	54.0	53.9
Guest nights	No.	362,150	477,933	603,267	409,205	358,098	496,191	1,846,244	1,866,761
Bed occupancy rate	per cent	25.6	33.3	42.7	28.7	24.8	33.9	32.5	32.5
Guest arrivals	No.	194,462	275,413	340,097	228,926	194,364	272,947	1,024,175	1,036,334
Average length of stay	days	1.9	1.7	1.8	1.8	1.8	1.8	1.8	1.8
Takings from accommodation	\$'000	15,229	20,159	24,963	17,954	15,501	22,090	75,999	80,507

TABLE 2 — SUMMARY OF CARAVAN PARKS, TASMANIA

Particulars	Unit	Quarter ended				Year ended			
		September 1994	December 1994	March 1995	June 1995	September 1995	December 1995	December 1994	December 1995
SHORT-TERM CARAVAN PARKS									
Establishments	No.	63	63	63	63	59	59
Capacity									
On-site vans	No.	269	276	272	273	248	259
Other powered sites	No.	3,085	3,095	3,090	3,101	2,895	2,907
Unpowered sites	No.	2,276	2,266	2,175	1,932	1,756	1,750
Cabins, etc.	No.	347	362	338	362	364	376
<i>Total capacity</i>	<i>No.</i>	<i>5,977</i>	<i>5,999</i>	<i>5,875</i>	<i>5,668</i>	<i>5,263</i>	<i>5,292</i>
Sites occupied by long-term guests	No.	260	273	280	269	216	221
Other sites permanently reserved	No.	979	986	1,021	1,018	984	1,050
Employment (persons)	No.	195	219	227	198	194	225
Site nights occupied	No.	140,206	169,002	211,504	156,710	134,839	166,716	643,136	669,769
Site occupancy rate	per cent	25.5	30.6	40.0	30.4	28.1	34.2	30.0	33.3
Takings from accommodation	\$'000	819	1,505	2,471	1,237	841	1,544	5,534	6,093
LONG-TERM CARAVAN PARKS									
Establishments	No.	12	12	12	12	13	13
Capacity									
On-site vans	No.	116	112	121	118	137	121
Other powered sites	No.	500	508	507	504	586	578
Unpowered sites	No.	236	238	233	233	340	360
Cabins, etc.	No.	95	96	98	102	91	89
<i>Total capacity</i>	<i>No.</i>	<i>947</i>	<i>954</i>	<i>959</i>	<i>957</i>	<i>1,154</i>	<i>1,148</i>
Sites occupied by long-term guests	No.	184	188	190	183	208	198
Other sites permanently reserved	No.	21	20	17	17	25	41
Employment (persons)	No.	37	47	43	40	44	46
Site nights occupied	No.	23,989	25,738	29,840	26,124	27,243	29,884	107,786	113,091
Site occupancy rate	per cent	27.5	29.3	34.6	30.0	25.7	28.3	31.1	29.4
Takings from accommodation	\$'000	217	313	416	286	270	378	1,350	1,350
TOTAL CARAVAN PARKS									
Establishments	No.	75	75	75	75	72	72
Capacity									
On-site vans	No.	385	388	393	391	385	380
Other powered sites	No.	3,585	3,603	3,597	3,605	3,481	3,485
Unpowered sites	No.	2,512	2,504	2,408	2,165	2,096	2,110
Cabins, etc.	No.	442	458	436	464	455	465
<i>Total capacity</i>	<i>No.</i>	<i>6,924</i>	<i>6,953</i>	<i>6,834</i>	<i>6,625</i>	<i>6,417</i>	<i>6,440</i>
Sites occupied by long-term guests	No.	444	461	470	452	424	419
Other sites permanently reserved	No.	1,000	1,006	1,038	1,035	1,009	1,091
Employment (persons)	No.	232	266	270	238	238	271
Site nights occupied	No.	164,195	194,740	241,344	182,834	162,082	196,600	750,922	782,860
Site occupancy rate	per cent	25.8	30.4	39.2	30.3	27.7	33.2	30.1	32.7
Takings from accommodation	\$'000	1,036	1,818	2,886	1,523	1,111	1,923	6,884	7,443

TABLE 3 — SUMMARY OF HOLIDAY FLATS, UNITS AND HOUSES, TASMANIA

Particulars	Unit	Quarter ended				Year ended			
		September 1994	December 1994	March 1995	June 1995	September 1995	December 1995	December 1994	December 1995
Letting entities	No.	53	52	55	54	54	54
Flats, units and houses									
Single bedroom	No.	264	265	272	230	226	235
Multiple bedroom	No.	540	551	595	600	595	595
<i>Total flats, units and houses</i>	<i>No.</i>	<i>804</i>	<i>816</i>	<i>867</i>	<i>830</i>	<i>821</i>	<i>830</i>
Bed spaces	No.	3,533	3,578	3,761	3,677	3,665	3,660
Employment (persons)	No.	305	339	382	295	343	367
Unit nights occupied	No.	31,286	42,775	56,752	32,897	28,778	40,351	160,267	158,778
Unit occupancy rate	per cent	42.5	57.0	72.7	43.6	38.3	52.8	54.8	52.0
Unit lettings	No.	14,542	21,186	26,177	15,872	13,236	19,731	75,963	75,016
Average length of stay	days	2.2	2.0	2.2	2.1	2.2	2.0	2.1	2.1
Takings from accommodation	\$'000	2,044	3,036	4,391	2,343	1,933	2,958	11,261	11,626

TABLE 4 — SUMMARY OF VISITOR HOSTELS, TASMANIA

Particulars	Unit	Quarter ended				Year ended			
		September 1994	December 1994	March 1995	June 1995	September 1995	December 1995	December 1994	December 1995
Establishments	No.	41	44	43	42	41	41
Bed spaces	No.	1,712	1,813	1,786	1,748	1,770	1,719
Employment (persons)	No.	95	112	115	113	95	110
Guest nights	No.	12,399	28,376	46,606	20,257	12,804	29,682	91,595	109,349
Bed occupancy rate	per cent	8.0	17.1	29.0	12.8	8.1	18.8	15.6	17.2
Guest arrivals	No.	7,518	17,106	28,328	12,733	8,046	19,053	59,057	68,160
Average length of stay	days	1.6	1.7	1.6	1.6	1.6	1.6	1.6	1.6
Takings from accommodation	\$'000	145	377	547	226	158	361	1,103	1,292

TABLE 5—HOTELS, MOTELS AND GUEST HOUSES WITH FACILITIES BY STAR GRADING, TASMANIA

Particulars	Licensed hotels with facilities	Motels and guest houses	Star grading			Total
			1, 2 and Ungraded	3	4 and 5	
ESTABLISHMENTS, CAPACITY AND EMPLOYMENT						
<i>December quarter 1994—</i>						
Establishments	92	85	74	80	23	177
Guest rooms	3,526	1,828	1,387	2,508	1,459	5,354
Bed spaces	9,921	5,674	3,948	7,441	4,206	15,595
Employment (persons)	3,576	815	1,007	1,376	2,008	4,391
<i>December quarter 1995—</i>						
Establishments	92	88	65	85	30	180
Guest rooms	3,566	1,937	1,222	2,649	1,632	5,503
Bed spaces	9,911	5,981	3,390	7,851	4,651	15,892
Employment (persons)	3,772	874	839	1,537	2,270	4,646
ROOM NIGHTS OCCUPIED						
<i>December quarter 1994</i>	177,580	94,786	53,072	122,302	96,992	272,366
<i>1995—</i>						
October	61,225	34,094	15,105	44,447	35,767	95,319
November	67,808	36,864	16,188	50,702	37,782	104,672
December	57,232	31,564	14,039	41,666	33,091	88,796
<i>December quarter 1995</i>	186,265	102,522	45,332	136,815	106,640	288,787
ROOM OCCUPANCY RATES (per cent)						
<i>December quarter 1994</i>	54.9	56.4	41.9	53.0	72.3	55.4
<i>1995—</i>						
October	55.4	56.8	39.9	54.1	70.7	55.9
November	63.4	63.4	44.2	63.8	77.2	63.4
December	51.8	52.6	37.1	50.7	65.4	52.1
<i>December quarter 1995</i>	56.8	57.5	40.3	56.1	71.0	57.0
GUEST NIGHTS						
<i>December quarter 1994</i>	302,266	175,667	100,164	218,401	159,368	477,933
<i>1995—</i>						
October	100,293	61,447	25,955	79,205	56,580	161,740
November	109,062	65,953	27,425	88,219	59,371	175,015
December	99,740	59,696	25,000	76,204	58,232	159,436
<i>December quarter 1995</i>	309,095	187,096	78,380	243,628	174,183	496,191
BED OCCUPANCY RATES (per cent)						
<i>December quarter 1994</i>	33.2	33.7	27.7	31.9	41.2	33.3
<i>1995—</i>						
October	32.6	33.1	24.7	32.5	39.2	32.8
November	36.7	36.8	27.0	37.5	42.6	36.7
December	32.5	32.2	23.8	31.3	40.4	32.4
<i>December quarter 1995</i>	33.9	34.0	25.1	33.7	40.7	33.9
GUEST ARRIVALS						
<i>December quarter 1994</i>	170,077	105,336	68,196	134,501	72,716	275,413
<i>1995—</i>						
October	52,601	34,451	15,099	45,386	26,567	87,052
November	59,310	38,625	16,481	52,617	28,837	97,935
December	54,102	33,858	15,081	45,816	27,063	87,960
<i>December quarter 1995</i>	166,013	106,934	46,661	143,819	82,467	272,947
AVERAGE LENGTH OF STAY (days)						
<i>December quarter 1994</i>	1.8	1.7	1.5	1.6	2.2	1.7
<i>December quarter 1995</i>	1.9	1.7	1.7	1.7	2.1	1.8
TAKINGS FROM ACCOMMODATION (\$'000)						
<i>December quarter 1994</i>	14,188	5,971	3,143	7,598	9,418	20,159
<i>1995—</i>						
October	5,005	2,264	889	2,833	3,548	7,269
November	5,440	2,410	969	3,185	3,696	7,850
December	4,807	2,164	908	2,731	3,332	6,971
<i>December quarter 1995</i>	15,252	6,838	2,766	8,748	10,576	22,090

TABLE 6 — HOTELS, MOTELS AND GUEST HOUSES WITH FACILITIES BY ESTABLISHMENT SIZE, TASMANIA

Particulars	Establishment size (No. of rooms)						Total
	5-9	10-15	16-25	26-50	51-100	101+	
ESTABLISHMENTS, CAPACITY AND EMPLOYMENT							
<i>December quarter 1994—</i>							
Establishments	40	30	33	47	19	8	177
Guest rooms	279	339	677	1,607	1,203	1,249	5,354
Bed spaces	727	913	2,018	4,792	3,681	3,464	15,595
Employment (persons)	245	324	419	896	727	1,780	4,391
<i>December quarter 1995—</i>							
Establishments	42	30	30	50	20	8	180
Guest rooms	298	342	611	1,707	1,296	1,249	5,503
Bed spaces	754	939	1,722	5,053	4,016	3,408	15,892
Employment (persons)	236	348	405	943	821	1,893	4,646
ROOM NIGHTS OCCUPIED							
<i>December quarter 1994</i>	12,208	13,921	27,319	77,660	60,730	80,528	272,366
<i>1995—</i>							
October	3,882	4,844	8,921	29,125	21,081	27,466	95,319
November	4,322	5,761	9,232	31,820	23,253	30,284	104,672
December	4,074	4,634	8,436	24,441	21,106	26,105	88,796
<i>December quarter 1995</i>	12,278	15,239	26,589	85,386	65,440	83,855	288,787
ROOM OCCUPANCY RATES (per cent)							
<i>December quarter 1994</i>	47.6	45.8	43.9	52.5	54.9	70.1	55.4
<i>1995—</i>							
October	42.0	45.7	47.1	55.0	52.5	70.9	55.9
November	48.3	56.2	50.4	62.1	59.8	80.8	63.4
December	44.1	43.7	44.5	46.2	52.5	67.4	52.1
<i>December quarter 1995</i>	44.8	48.4	47.3	54.4	54.9	73.0	57.0
GUEST NIGHTS							
<i>December quarter 1994</i>	20,195	23,789	50,715	138,146	113,855	131,233	477,933
<i>1995—</i>							
October	6,355	8,105	15,277	51,988	37,496	42,519	161,740
November	7,395	9,785	15,819	55,352	39,976	46,688	175,015
December	6,963	7,900	15,750	45,070	39,850	43,903	159,436
<i>December quarter 1995</i>	20,713	25,790	46,846	152,410	117,322	133,110	496,191
BED OCCUPANCY RATES (per cent)							
<i>December quarter 1994</i>	30.2	28.8	27.3	31.3	33.6	41.2	33.3
<i>1995—</i>							
October	27.2	27.8	28.6	33.2	30.1	40.2	32.8
November	32.7	34.7	30.6	36.5	33.2	45.7	36.7
December	29.8	27.1	29.5	28.8	32.0	41.6	32.4
<i>December quarter 1995</i>	29.9	29.9	29.6	32.8	31.8	42.5	33.9
GUEST ARRIVALS							
<i>December quarter 1994</i>	12,953	14,160	29,799	87,698	74,712	56,091	275,413
<i>1995—</i>							
October	4,063	5,134	9,330	30,276	21,338	16,911	87,052
November	4,643	5,882	9,699	34,096	24,463	19,152	97,935
December	4,143	4,991	9,234	28,316	23,100	18,176	87,960
<i>December quarter 1995</i>	12,849	16,007	28,263	92,688	68,901	54,239	272,947
AVERAGE LENGTH OF STAY (days)							
<i>December quarter 1994</i>	1.6	1.7	1.7	1.6	1.5	2.3	1.7
<i>December quarter 1995</i>	1.6	1.6	1.7	1.6	1.7	2.5	1.8
TAKINGS FROM ACCOMMODATION (\$'000)							
<i>December quarter 1994</i>	708	706	1,570	4,683	4,804	7,688	20,159
<i>1995—</i>							
October	227	271	518	1,831	1,707	2,716	7,269
November	260	299	537	1,948	1,905	2,900	7,850
December	240	254	508	1,559	1,842	2,568	6,971
<i>December quarter 1995</i>	726	824	1,563	5,338	5,454	8,184	22,090

TABLE 7—HOTELS, MOTELS AND GUEST HOUSES WITH FACILITIES BY STATISTICAL DIVISION,
TASMANIA

Particulars	Greater Hobart (SD)			Southern (SD)			Northern (SD)		
	Licensed hotels with facilities	Motels and guest houses	Total	Licensed hotels with facilities	Motels and guest houses	Total	Licensed hotels with facilities	Motels and guest houses	Total
ESTABLISHMENTS, CAPACITY AND EMPLOYMENT									
<i>December quarter 1994—</i>									
Establishments	24	27	51	14	10	24	31	22	53
Guest rooms	1,224	648	1,872	479	101	580	1,092	426	1,518
Bed spaces	3,199	1,985	5,184	1,456	360	1,816	3,239	1,407	4,646
Employment (persons)	1,601	287	1,888	260	50	310	1,142	139	1,281
<i>December quarter 1995—</i>									
Establishments	23	27	50	14	9	23	32	24	56
Guest rooms	1,223	662	1,885	477	134	611	1,135	468	1,603
Bed spaces	3,152	1,999	5,151	1,437	503	1,940	3,321	1,506	4,827
Employment (persons)	1,648	303	1,951	268	101	369	1,312	143	1,455
ROOM NIGHTS OCCUPIED									
<i>December quarter 1994</i>	77,397	38,352	115,749	17,548	4,029	21,577	53,458	21,018	74,476
<i>1995—</i>									
October	25,973	13,146	39,119	5,168	1,784	6,952	20,009	9,087	29,096
November	28,450	14,647	43,097	6,447	2,121	8,568	21,009	8,850	29,859
December	24,529	11,972	36,501	5,635	2,384	8,019	17,254	6,562	23,816
<i>December quarter 1995</i>	78,952	39,765	118,717	17,250	6,289	23,539	58,272	24,499	82,771
ROOM OCCUPANCY RATES (per cent)									
<i>December quarter 1994</i>	69.2	64.3	67.5	39.8	43.4	40.4	53.2	53.6	53.3
<i>1995—</i>									
October	68.5	64.1	66.9	34.9	42.9	36.7	56.9	62.6	58.6
November	77.5	73.8	76.2	45.1	52.8	46.7	61.7	63.0	62.1
December	64.7	58.3	62.5	38.1	57.4	42.3	49.0	45.2	47.9
<i>December quarter 1995</i>	70.2	65.3	68.5	39.3	51.0	41.9	55.8	56.9	56.1
GUEST NIGHTS									
<i>December quarter 1994</i>	126,259	70,530	196,789	36,469	8,771	45,240	90,008	39,512	129,520
<i>1995—</i>									
October	40,713	24,087	64,800	10,342	3,990	14,332	32,896	16,021	48,917
November	44,403	26,352	70,755	12,623	4,379	17,002	33,640	15,846	49,486
December	41,479	23,296	64,775	11,986	5,472	17,458	29,645	12,025	41,670
<i>December quarter 1995</i>	126,595	73,735	200,330	34,951	13,841	48,792	96,181	43,892	140,073
BED OCCUPANCY RATES (per cent)									
<i>December quarter 1994</i>	43.1	38.6	41.4	27.2	26.5	27.1	30.2	30.5	30.3
<i>1995—</i>									
October	41.7	38.9	40.6	23.2	25.6	23.8	32.0	34.3	32.7
November	47.0	43.9	45.8	29.3	29.0	29.2	33.8	35.1	34.2
December	42.5	37.6	40.6	26.9	35.1	29.0	28.8	25.8	27.8
<i>December quarter 1995</i>	43.7	40.1	42.3	26.4	29.9	27.3	31.5	31.7	31.5
GUEST ARRIVALS									
<i>December quarter 1994</i>	52,077	34,527	86,604	29,078	6,389	35,467	53,099	23,166	76,265
<i>1995—</i>									
October	16,262	11,369	27,631	8,248	1,997	10,245	17,002	8,845	25,847
November	18,024	13,232	31,256	10,293	2,522	12,815	18,539	9,246	27,785
December	17,417	11,808	29,225	9,382	2,452	11,834	16,340	7,459	23,799
<i>December quarter 1995</i>	51,703	36,409	88,112	27,923	6,971	34,894	51,881	25,550	77,431
AVERAGE LENGTH OF STAY (days)									
<i>December quarter 1994</i>	2.4	2.0	2.3	1.3	1.4	1.3	1.7	1.7	1.7
<i>December quarter 1995</i>	2.4	2.0	2.3	1.3	2.0	1.4	1.9	1.7	1.8
TAKINGS FROM ACCOMMODATION (\$'000)									
<i>December quarter 1994</i>	7,003	2,396	9,400	1,041	300	1,342	3,940	1,269	5,209
<i>1995—</i>									
October	2,443	829	3,272	310	189	499	1,505	563	2,068
November	2,631	908	3,539	390	210	599	1,535	533	2,068
December	2,305	763	3,069	366	273	639	1,339	412	1,751
<i>December quarter 1995</i>	7,380	2,500	9,880	1,066	671	1,737	4,379	1,507	5,887

TABLE 7 — HOTELS, MOTELS AND GUEST HOUSES WITH FACILITIES BY STATISTICAL DIVISION,
TASMANIA—continued

Particulars	Mersey-Lyell (SD)			Total Tasmania		East Coast (a)	
	Licensed hotels with facilities	Motels and guest houses	Total	Licensed hotels with facilities	Motels and guest houses	Total	Total
ESTABLISHMENTS, CAPACITY AND EMPLOYMENT							
<i>December quarter 1994—</i>							
Establishments	23	26	49	92	85	177	14
Guest rooms	731	653	1,384	3,526	1,828	5,354	451
Bed spaces	2,027	1,922	3,949	9,921	5,674	15,595	1,451
Employment (persons)	573	339	912	3,576	815	4,391	251
<i>December quarter 1995—</i>							
Establishments	23	28	51	92	88	180	14
Guest rooms	731	673	1,404	3,566	1,937	5,503	485
Bed spaces	2,001	1,973	3,974	9,911	5,981	15,892	1,586
Employment (persons)	544	327	871	3,772	874	4,646	318
ROOM NIGHTS OCCUPIED							
<i>December quarter 1994</i>	29,177	31,387	60,564	177,580	94,786	272,366	15,957
<i>1995—</i>							
October	10,075	10,077	20,152	61,225	34,094	95,319	5,762
November	11,902	11,246	23,148	67,808	36,864	104,672	6,511
December	9,814	10,064	20,460	57,232	31,564	88,796	6,242
<i>December quarter 1995</i>	31,791	31,969	63,760	186,265	102,522	288,787	18,515
ROOM OCCUPANCY RATES (per cent)							
<i>December quarter 1994</i>	43.4	52.2	47.6	54.9	56.4	55.4	38.5
<i>1995—</i>							
October	44.5	48.3	46.3	55.4	56.8	55.9	38.3
November	54.3	55.7	55.0	63.4	63.4	63.4	44.7
December	43.3	51.0	47.0	51.8	52.6	52.1	41.5
<i>December quarter 1995</i>	47.3	51.6	49.4	56.8	57.5	57.0	41.5
GUEST NIGHTS							
<i>December quarter 1994</i>	49,530	56,854	106,384	302,266	175,667	477,933	33,504
<i>1995—</i>							
October	16,342	17,349	33,691	100,293	61,447	161,740	11,384
November	18,396	19,376	37,772	109,062	65,953	175,015	12,550
December	16,630	18,903	35,533	99,740	59,696	159,436	13,109
<i>December quarter 1995</i>	51,368	55,628	106,996	309,095	187,096	496,191	37,043
BED OCCUPANCY RATES (per cent)							
<i>December quarter 1994</i>	26.6	32.2	29.3	33.2	33.7	33.3	25.1
<i>1995—</i>							
October	26.3	28.4	27.3	32.6	33.1	32.8	23.2
November	30.6	32.7	31.7	36.7	36.8	36.7	26.4
December	26.8	30.9	28.8	32.5	32.2	32.4	26.7
<i>December quarter 1995</i>	27.9	30.6	29.3	33.9	34.0	33.9	25.4
GUEST ARRIVALS							
<i>December quarter 1994</i>	35,823	41,254	77,077	170,077	105,336	275,413	25,906
<i>1995—</i>							
October	11,089	12,240	23,329	52,601	34,451	87,052	7,413
November	12,454	13,625	26,079	59,310	38,625	97,935	8,992
December	10,963	12,139	23,102	54,102	33,858	87,960	8,292
<i>December quarter 1995</i>	34,506	38,004	72,510	166,013	106,934	272,947	24,697
AVERAGE LENGTH OF STAY (days)							
<i>December quarter 1994</i>	1.4	1.4	1.4	1.8	1.7	1.7	1.3
<i>December quarter 1995</i>	1.5	1.5	1.5	1.9	1.7	1.8	1.5
TAKINGS FROM ACCOMMODATION (\$'000)							
<i>December quarter 1994</i>	2,204	2,005	4,209	14,188	5,971	20,159	917
<i>1995—</i>							
October	747	683	1,430	5,005	2,264	7,269	391
November	883	760	1,644	5,440	2,410	7,850	438
December	796	716	1,513	4,807	2,164	6,971	496
<i>December quarter 1995</i>	2,427	2,160	4,586	15,252	6,838	22,090	1,325

(a) The East Coast Tourist Area comprises Glamorgan/Spring Bay (M) and Break O' Day (M).

TABLE 8—HOTELS, MOTELS AND GUEST HOUSES WITH FACILITIES: STATISTICAL DIVISIONS

Statistical Divisions and selected Statistical Local Areas	Establish- ments	Guest rooms	Bed spaces	Employ- ment (persons)	Room nights occupied				Room occupancy rates (per cent)			
					Oct.	Nov.	Dec.	Dec. qtr	Oct.	Nov.	Dec.	Dec. qtr
					Clarence (C)	4	55	157	36	952	995	825
Glenorchy (C)	6	162	412	103	3,121	3,226	2,741	9,088	62.1	66.4	54.6	61.0
Hobart (C)												
Inner	6	433	1,062	227	8,741	10,517	8,137	27,395	65.1	81.0	60.6	68.8
Remainder	29	1,161	3,314	1,529	25,566	27,431	23,965	76,962	71.0	78.8	66.6	72.1
Total	35	1,594	4,376	1,756	34,307	37,948	32,102	104,357	69.4	79.4	65.0	71.2
Balance	5	74	206	56	739	928	833	2,500	32.2	41.8	36.3	36.7
Greater Hobart (SD)	50	1,885	5,151	1,951	39,119	43,097	36,501	118,717	66.9	76.2	62.5	68.5
Glamorgan/Spring Bay (M)	9	325	1,161	221	3,912	4,798	4,785	13,495	38.8	49.2	47.5	45.1
Tasman (M)	6	137	425	91	2,118	2,507	2,008	6,633	49.9	61.0	47.3	52.6
Balance	8	149	354	57	922	1,263	1,226	3,411	20.0	28.3	26.5	24.9
Southern (SD)	23	611	1,940	369	6,952	8,568	8,019	23,539	36.7	46.7	42.3	41.9
Break O'Day (M)	5	160	425	97	1,850	1,713	1,457	5,020	37.3	35.7	29.4	34.1
Launceston (C)												
Inner	10	474	1,339	370	9,938	10,348	7,904	28,190	67.6	72.8	53.8	64.6
Parts B & C	23	610	1,992	338	11,489	11,909	8,894	32,292	60.8	65.1	47.0	57.5
Total	33	1,084	3,331	708	21,427	22,257	16,798	60,482	63.8	68.4	50.0	60.6
Northern Midlands (M)— Pts A & B	3	25	67	19	322	285	237	844	41.5	38.0	30.6	36.7
West Tamar (M)— Pts A & B	7	125	388	128	2,071	1,616	1,258	4,945	53.4	43.1	32.5	43.0
Balance	8	209	616	503	3,426	3,988	4,066	11,480	52.9	63.6	62.8	59.7
Northern (SD)	56	1,603	4,827	1,455	29,096	29,859	23,816	82,771	58.6	62.1	47.9	56.1
Burnie (C)— Pts A & B	8	229	557	134	2,833	3,168	2,174	8,175	39.9	46.1	30.6	38.8
Central Coast (M)— Pts A & B	5	115	291	77	1,317	1,666	1,098	4,081	36.9	48.3	30.8	38.6
Circular Head (M)	3	94	236	82	1,274	1,918	1,579	4,771	43.7	68.0	54.2	55.2
Devonport (C)	9	242	702	130	3,274	3,746	3,090	10,110	43.6	51.6	41.2	45.4
Waratah/Wynyard (M)— Pts A & B	8	132	352	70	1,158	1,158	1,647	3,963	28.3	29.2	40.2	32.6
West Coast (M)	11	419	1,209	222	6,675	7,586	6,652	20,913	51.4	60.4	51.2	54.3
Balance	7	173	627	156	3,621	3,906	4,220	11,747	67.5	75.3	78.7	73.8
Mersey-Lyell (SD)	51	1,404	3,974	871	20,152	23,148	20,460	63,760	46.3	55.0	47.0	49.4
Total Tasmania	180	5,503	15,892	4,646	95,319	104,672	88,796	288,787	55.9	63.4	52.1	57.0

AND SELECTED STATISTICAL LOCAL AREAS, TASMANIA, DECEMBER QUARTER 1995

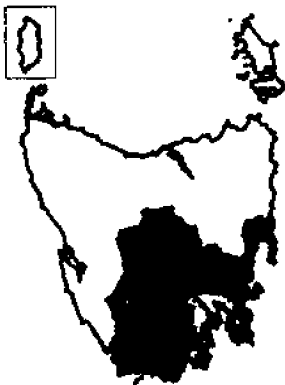
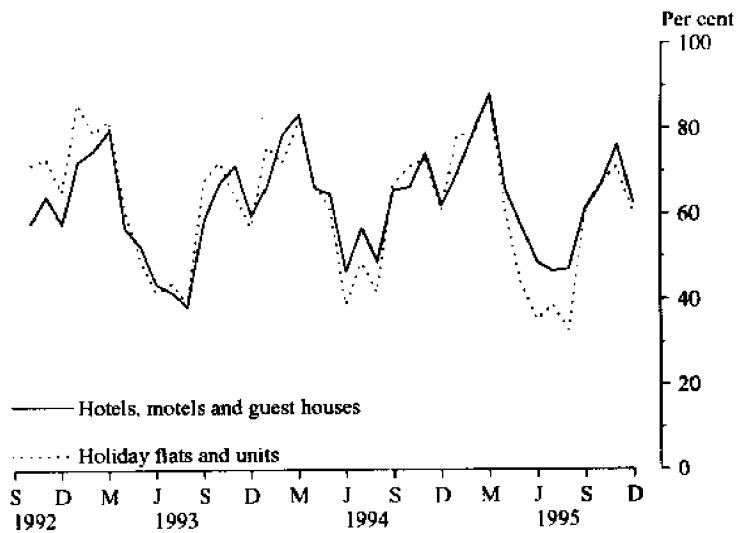
<i>Guest nights</i>				<i>Guest arrivals</i>				<i>Takings from accommodation (\$'000)</i>			
<i>Oct.</i>	<i>Nov.</i>	<i>Dec.</i>	<i>Dec. qtr</i>	<i>Oct.</i>	<i>Nov.</i>	<i>Dec.</i>	<i>Dec. qtr</i>	<i>Oct.</i>	<i>Nov.</i>	<i>Dec.</i>	<i>Dec. qtr</i>
1,692	1,823	1,528	5,043	921	1,030	869	2,820	49	57	48	154
5,388	5,367	4,805	15,560	2,472	2,669	2,397	7,538	153	160	132	446
13,824	16,830	13,142	43,796	6,505	7,818	7,067	21,390	632	752	578	1,962
42,559	45,138	43,806	131,503	16,905	18,639	17,941	53,485	2,394	2,521	2,268	7,183
56,383	61,968	56,948	175,299	23,410	26,457	25,008	74,875	3,027	3,273	2,846	9,146
1,337	1,597	1,494	4,428	828	1,100	951	2,879	43	49	42	134
64,800	70,755	64,775	200,330	27,631	31,256	29,225	88,112	3,272	3,539	3,069	9,880
7,985	9,451	10,601	28,037	5,338	6,902	6,575	18,815	295	346	420	1,062
4,518	5,195	4,427	14,140	3,802	4,451	3,835	12,088	148	172	145	465
1,829	2,356	2,430	6,615	1,105	1,462	1,424	3,991	56	81	74	211
14,332	17,002	17,458	48,792	10,245	12,815	11,834	34,894	499	599	639	1,737
3,399	3,099	2,508	9,006	2,075	2,090	1,717	5,882	96	91	76	264
15,086	16,060	13,134	44,280	7,852	8,872	7,701	24,425	777	810	599	2,186
20,992	21,019	16,545	58,556	11,055	11,526	9,855	32,436	723	726	573	2,022
36,078	37,079	29,679	102,836	18,907	20,398	17,556	56,861	1,500	1,536	1,172	4,208
477	413	344	1,234	243	268	197	708	15	12	9	37
3,391	2,706	2,392	8,489	2,103	1,769	1,547	5,419	137	101	88	326
5,572	6,189	6,747	18,508	2,519	3,260	2,782	8,561	320	328	405	1,052
48,917	49,486	41,670	140,073	25,847	27,785	23,799	77,431	2,068	2,068	1,751	5,887
3,835	4,335	3,252	11,422	3,103	3,591	2,623	9,317	192	212	151	555
1,915	2,523	1,644	6,082	1,342	1,532	1,029	3,903	62	82	55	199
2,483	3,131	2,694	8,308	1,957	2,183	1,769	5,909	85	105	92	282
5,041	5,727	4,964	15,732	3,657	4,169	3,433	11,259	222	251	203	676
2,066	2,164	3,183	7,413	1,409	1,396	1,615	4,420	66	70	99	236
10,989	12,276	10,801	34,066	7,347	8,458	7,257	23,062	393	452	396	1,241
7,362	7,616	8,995	23,973	4,514	4,750	5,376	14,640	410	471	516	1,397
33,691	37,772	35,533	106,996	23,329	26,079	23,102	72,510	1,430	1,644	1,513	4,586
161,740	175,015	159,436	496,191	87,052	97,935	87,960	272,947	7,269	7,850	6,971	22,090

MONTHLY ROOM/UNIT OCCUPANCY RATES

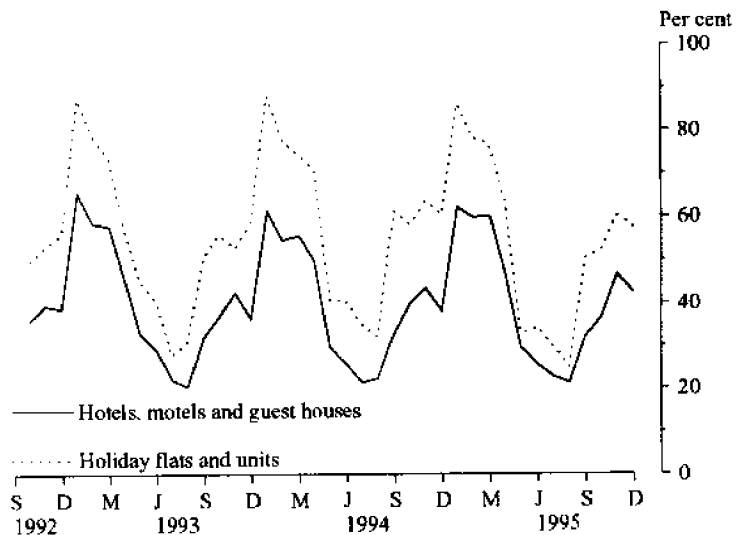
Graphs on these pages compare room occupancy rates for hotels, motels and guest houses with facilities with unit occupancy rates for holiday unit establishments for each Statistical Division and the East Coast Tourist area.



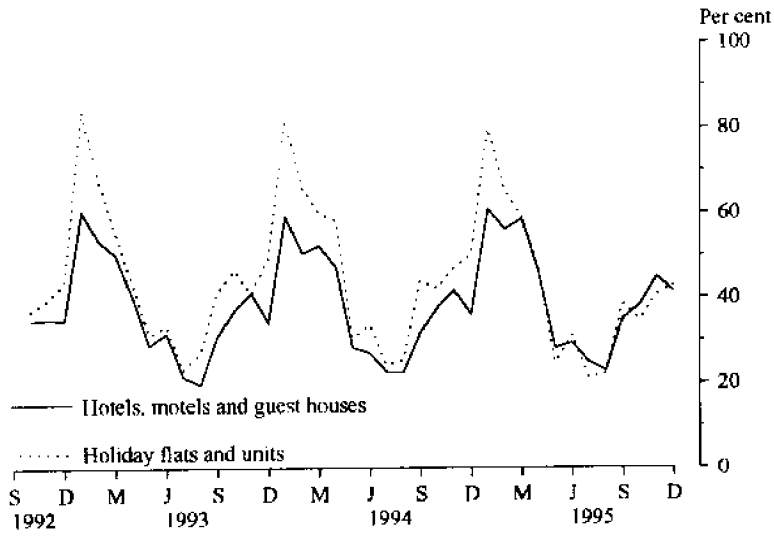
GREATER HOBART STATISTICAL DIVISION



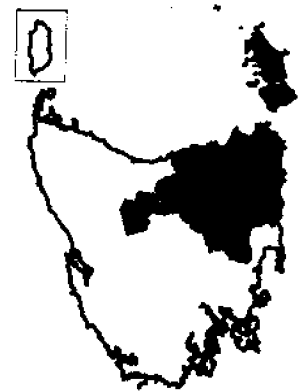
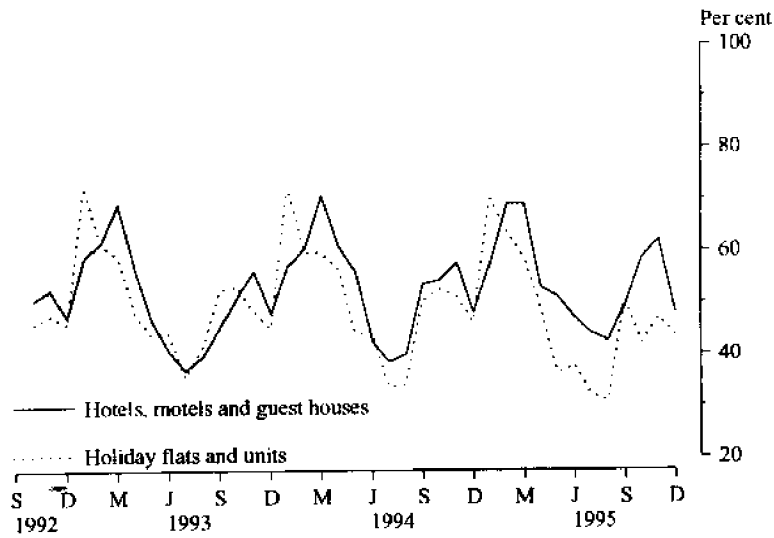
SOUTHERN STATISTICAL DIVISION



EAST COAST TOURIST AREA



NORTHERN STATISTICAL DIVISION



MERSEY-LYELL STATISTICAL DIVISION

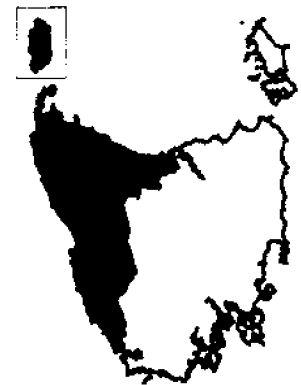
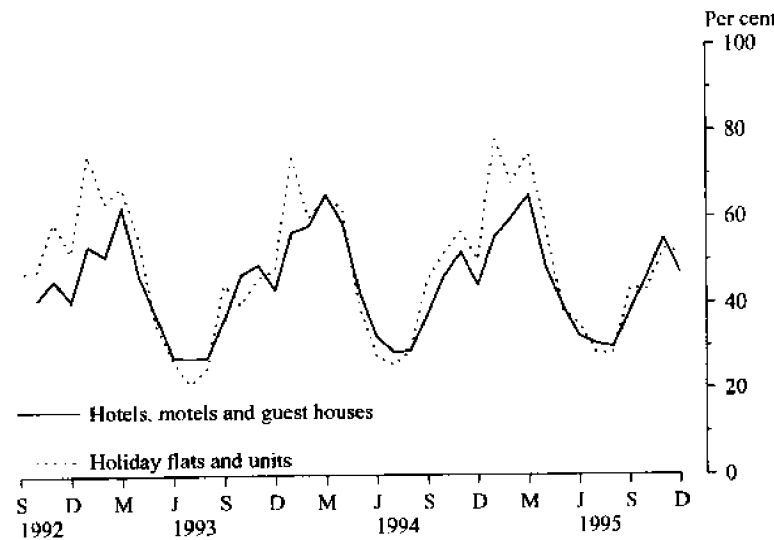


TABLE 9 — HOLIDAY FLATS, UNITS AND HOUSES BY STATISTICAL DIVISION AND SELECTED STATISTICAL AREAS, TASMANIA

Particulars	Northern (SD)				Total	Mersey-Lyell (SD)	Total Tasmania	East Coast (a)
	Greater Hobart (SD)	Southern (SD)	Greater Launceston and Central North (SSDs)	North Eastern (SSD)				
LETTING ENTITIES, CAPACITY AND EMPLOYMENT								
December quarter 1994—								
Letting entities	13	9	10	7	17	13	52	11
Flats, units and houses								
Single bedroom	54	21	121	30	151	39	265	41
Multiple bedroom	177	81	123	71	194	99	551	95
Total flats, units and houses	231	102	244	101	345	138	816	136
Bed spaces	1,041	519	902	477	1,379	639	3,578	636
Employment (persons)	76	47	129	33	162	54	339	53
December quarter 1995—								
Letting entities	13	9	11	7	18	14	54	11
Flats, units and houses								
Single bedroom	50	21	93	29	122	42	235	40
Multiple bedroom	182	81	139	72	211	121	595	96
Total flats, units and houses	232	102	232	101	333	163	830	136
Bed spaces	1,039	517	899	472	1,371	733	3,660	630
Employment (persons)	78	47	157	30	187	55	367	50
UNIT NIGHTS OCCUPIED								
December quarter 1994	14,524	5,698	12,989	2,860	15,849	6,704	42,775	5,821
1995—								
October	4,854	1,659	3,641	710	4,351	2,183	13,047	1,464
November	4,951	1,842	3,848	844	4,692	2,571	14,056	1,664
December	4,335	1,817	3,473	1,008	4,481	2,615	13,248	1,814
December quarter 1995	14,140	5,318	10,962	2,562	13,524	7,369	40,351	4,942
UNIT OCCUPANCY RATES (per cent)								
December quarter 1994	68.3	60.7	57.9	30.8	49.9	52.8	57.0	46.5
1995—								
October	67.5	52.5	50.6	22.7	42.1	43.2	50.7	34.7
November	71.1	60.2	55.3	27.9	47.0	52.6	56.4	40.8
December	60.3	57.5	48.3	32.2	43.4	51.8	51.5	43.0
December quarter 1995	66.2	56.7	51.4	27.6	44.1	49.1	52.8	39.5
UNIT LETTINGS								
December quarter 1994	5,197	3,712	6,823	1,553	8,376	3,901	21,186	3,474
1995—								
October	1,707	1,054	1,477	371	1,848	1,283	5,892	828
November	2,077	1,232	2,072	457	2,529	1,501	7,339	980
December	1,750	1,114	1,754	487	2,241	1,395	6,500	973
December quarter 1995	5,534	3,400	5,303	1,315	6,618	4,179	19,731	2,781
AVERAGE LENGTH OF STAY (days)								
December quarter 1994	2.8	1.5	1.9	1.8	1.9	1.7	2.0	1.7
1995—								
October	2.8	1.6	2.5	1.9	2.4	1.7	2.2	1.8
November	2.4	1.5	1.9	1.8	1.9	1.7	1.9	1.7
December	2.5	1.6	2.0	2.1	2.0	1.9	2.0	1.9
December quarter 1995	2.6	1.6	2.1	1.9	2.0	1.8	2.0	1.8
TAKINGS FROM ACCOMMODATION (\$'000)								
December quarter 1994	1,031	462	1,007	139	1,146	396	3,036	413
1995—								
October	332	127	306	36	342	127	928	100
November	364	146	307	46	354	147	1,011	121
December	330	160	311	46	357	172	1,019	137
December quarter 1995	1,026	434	924	128	1,052	445	2,958	359

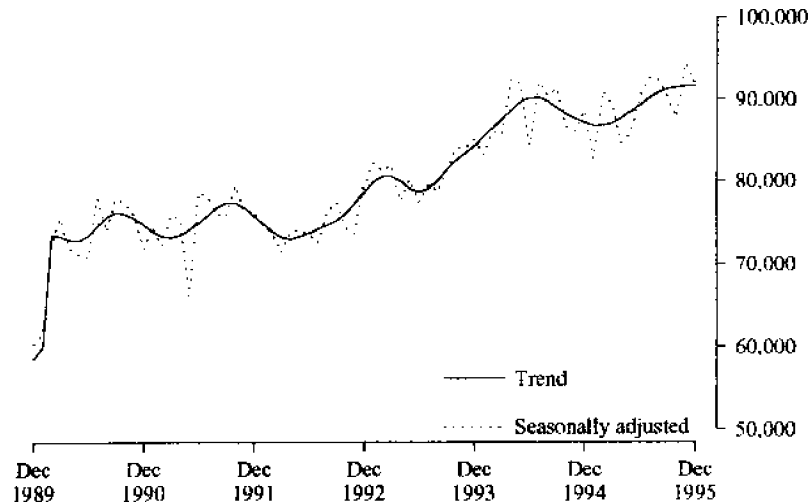
(a) The East Coast Tourist Area comprises Glamorgan/Spring Bay (M) and Break O' Day (M).

TABLE 10—CARAVAN PARKS BY STATISTICAL DIVISION AND SELECTED STATISTICAL AREAS, TASMANIA

Particulars	Northern (SD)					Mersey-Lyell (SD)	Total Tasmania	East Coast (a)
	Greater Hobart (SD)	Southern (SD)	Greater Launceston and Central North (SSDs)	North Eastern (SSD)	Total			
ESTABLISHMENTS, CAPACITY AND EMPLOYMENT								
<i>December quarter 1994—</i>								
Establishments	8	18	12	8	20	29	75	11
Capacity								
On-site vans	80	63	56	22	78	167	388	50
Other powered sites	310	791	492	524	1,016	1,486	3,603	656
Unpowered sites	266	387	562	639	1,201	650	2,504	530
Cabins, flats, etc.	62	128	72	20	92	176	458	77
<i>Total capacity</i>	<i>718</i>	<i>1,369</i>	<i>1,182</i>	<i>1,205</i>	<i>2,387</i>	<i>2,479</i>	<i>6,953</i>	<i>1,313</i>
Sites occupied by long-term guests	102	30	76	7	83	246	461	34
Other sites permanently reserved	14	329	96	279	375	288	1,006	351
Employment (persons)	36	75	40	20	60	95	266	44
<i>December quarter 1995</i>								
Establishments	7	18	12	8	20	27	72	11
Capacity								
On-site vans	69	67	56	25	81	163	380	55
Other powered sites	242	803	488	503	991	1,449	3,485	660
Unpowered sites	267	359	317	556	873	611	2,110	505
Cabins, flats, etc.	65	138	73	20	93	169	465	79
<i>Total capacity</i>	<i>643</i>	<i>1,367</i>	<i>934</i>	<i>1,104</i>	<i>2,038</i>	<i>2,392</i>	<i>6,440</i>	<i>1,299</i>
Sites occupied by long-term guests	67	27	80	10	90	235	419	32
Other sites permanently reserved	11	348	102	299	401	331	1,091	367
Employment (persons)	30	84	42	22	64	93	271	53
SITE NIGHTS OCCUPIED								
<i>December quarter 1994</i>	<i>21,128</i>	<i>47,559</i>	<i>25,485</i>	<i>33,191</i>	<i>58,676</i>	<i>67,377</i>	<i>194,740</i>	<i>47,159</i>
<i>1995—</i>								
October	5,270	14,168	8,396	10,119	18,515	21,906	59,859	14,178
November	6,572	14,362	8,638	10,074	18,712	22,912	62,558	13,452
December	6,711	17,756	9,026	11,273	20,299	29,417	74,183	15,403
<i>December quarter 1995</i>	<i>18,553</i>	<i>46,286</i>	<i>26,060</i>	<i>31,466</i>	<i>57,526</i>	<i>74,235</i>	<i>196,600</i>	<i>43,033</i>
SITE OCCUPANCY RATES (per cent)								
<i>December quarter 1994</i>	<i>32.0</i>	<i>37.8</i>	<i>23.4</i>	<i>29.9</i>	<i>26.7</i>	<i>29.5</i>	<i>30.4</i>	<i>39.0</i>
<i>1995—</i>								
October	26.4	33.4	29.0	29.6	29.3	29.5	30.0	35.2
November	34.1	35.0	30.8	30.4	30.6	31.9	32.4	34.5
December	33.7	41.9	31.2	32.9	32.1	39.7	37.2	38.3
<i>December quarter 1995</i>	<i>31.4</i>	<i>36.8</i>	<i>30.3</i>	<i>31.0</i>	<i>30.7</i>	<i>33.7</i>	<i>33.2</i>	<i>36.0</i>
TAKINGS FROM ACCOMMODATION (\$'000)								
<i>December quarter 1994</i>	<i>332</i>	<i>423</i>	<i>309</i>	<i>127</i>	<i>435</i>	<i>628</i>	<i>1,818</i>	<i>334</i>
<i>1995—</i>								
October	102	166	112	26	138	177	583	136
November	135	148	102	34	136	198	616	114
December	120	203	107	48	154	247	724	138
<i>December quarter 1995</i>	<i>357</i>	<i>516</i>	<i>320</i>	<i>108</i>	<i>428</i>	<i>621</i>	<i>1,923</i>	<i>389</i>

(a) The East Coast Tourist Area comprises Glamorgan/Spring Bay (M) and Break O' Day (M).

HOTEL/MOTEL ROOM NIGHTS



HOLIDAY UNIT NIGHTS

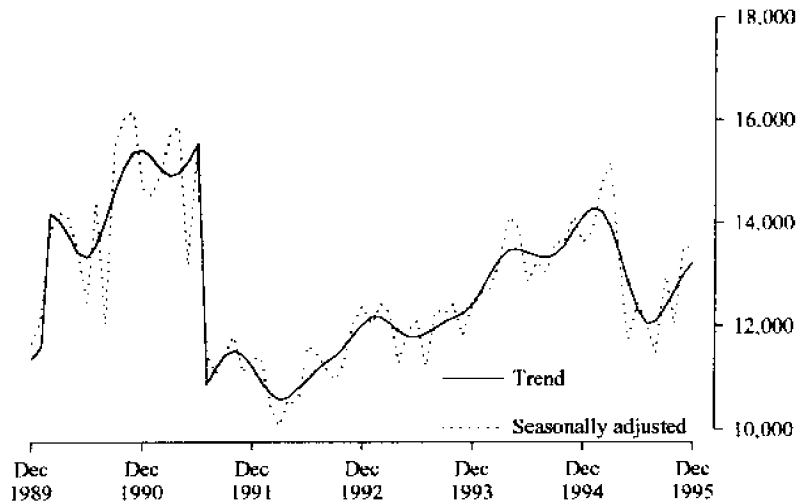


TABLE 11. HOTEL & MOTEL ETC. ROOM NIGHTS, HOLIDAY UNIT NIGHTS AND CARAVAN PARK SITE NIGHTS: SEASONALLY ADJUSTED AND TREND ESTIMATES

		Hotel, motel etc. with facilities, room nights		Holiday unit nights		Caravan park site nights	
		Seasonally adjusted	Trend	Seasonally adjusted	Trend	Seasonally adjusted	Trend
1993	October	83,990	82,472	12,436	12,156	60,679	60,032
	November	84,061	83,360	11,823	12,247	63,915	59,799
	December	85,032	84,332	12,428	12,432	57,594	59,575
1994	January	83,197	85,334	12,660	12,704	57,698	59,476
	February	85,954	86,418	12,736	13,025	58,343	59,611
	March	85,705	87,510	13,332	13,317	60,093	60,144
	April	92,496	88,641	14,124	13,483	64,568	61,031
	May	91,910	89,620	13,901	13,497	61,895	61,990
	June	84,244	90,136	12,859	13,421	59,465	62,929
	July	92,055	90,208	13,241	13,353	65,256	63,887
	August	90,459	89,745	13,033	13,331	65,559	64,929
	September	91,388	88,951	13,623	13,387	64,863	65,862
	October	86,595	88,173	13,592	13,568	65,403	66,368
	November	86,023	87,605	14,120	13,859	71,036	66,322
	December	88,640	87,114	13,618	14,134	64,909	65,847
1995	January	82,686	86,788	13,824	14,279	62,806	65,360
	February	90,988	86,814	14,743	14,232	64,669	65,132
	March	89,351	87,101	15,177	13,921	64,292	65,022
	April	84,549	87,726	13,330	13,415	67,573	65,045
	May	85,627	88,471	11,740	12,815	65,425	65,105
	June	90,403	89,313	12,448	12,291	64,886	65,096
	July	92,641	90,116	12,002	12,027	64,234	65,020
	August	92,331	90,799	11,464	12,097	63,446	65,194
	September	90,259	91,259	13,040	12,376	67,549	65,683
	October	87,788	91,464	12,014	12,689	65,293	66,341
	November	94,390	91,640	13,553	13,005	68,130	67,013
	December	91,832	91,651	13,488	13,255	67,575	67,603

TABLE 12 — VISITOR HOSTELS BY STATISTICAL DIVISION, TASMANIA

<i>Particulars</i>	<i>Greater Hobart (SD)</i>	<i>Southern (SD)</i>	<i>Northern (SD)</i>	<i>Mersey-Lyell (SD)</i>	<i>Total Tasmania</i>
ESTABLISHMENTS, CAPACITY AND EMPLOYMENT					
<i>December quarter 1994</i>					
Establishments	8	16	11	9	44
Bed spaces	442	433	332	606	1,813
Employment (persons)	40	24	20	28	112
<i>December quarter 1995—</i>					
Establishments	6	17	10	8	41
Bed spaces	322	548	310	539	1,719
Employment (persons)	31	38	18	23	110
GUEST NIGHTS					
<i>December quarter 1994</i>	<i>12,579</i>	<i>6,298</i>	<i>3,103</i>	<i>6,396</i>	<i>28,376</i>
<i>1995—</i>					
October	2,787	1,489	647	1,879	6,802
November	3,248	2,991	916	2,429	9,584
December	4,494	4,408	1,308	3,086	13,296
<i>December quarter 1995</i>	<i>10,529</i>	<i>8,888</i>	<i>2,871</i>	<i>7,394</i>	<i>29,682</i>
BED OCCUPANCY RATES (per cent)					
<i>December quarter 1994</i>	<i>30.9</i>	<i>16.1</i>	<i>10.2</i>	<i>11.5</i>	<i>17.1</i>
<i>1995</i>					
October	27.9	8.8	6.7	11.2	12.8
November	33.6	18.2	9.8	15.0	18.6
December	45.0	25.9	13.6	18.5	25.0
<i>December quarter 1995</i>	<i>35.5</i>	<i>17.6</i>	<i>10.1</i>	<i>14.9</i>	<i>18.8</i>
GUEST ARRIVALS					
<i>December quarter 1994</i>	<i>5,437</i>	<i>4,632</i>	<i>2,402</i>	<i>4,635</i>	<i>17,106</i>
<i>1995—</i>					
October	1,317	1,117	462	1,280	4,176
November	1,789	1,987	756	1,715	6,247
December	2,529	2,761	916	2,424	8,630
<i>December quarter 1995</i>	<i>5,635</i>	<i>5,865</i>	<i>2,134</i>	<i>5,419</i>	<i>19,053</i>
AVERAGE LENGTH OF STAY (days)					
<i>December quarter 1994</i>	<i>2.3</i>	<i>1.4</i>	<i>1.3</i>	<i>1.4</i>	<i>1.7</i>
<i>1995—</i>					
October	2.1	1.3	1.4	1.5	1.6
November	1.8	1.5	1.2	1.4	1.5
December	1.8	1.6	1.4	1.3	1.5
<i>December quarter 1995</i>	<i>1.9</i>	<i>1.5</i>	<i>1.3</i>	<i>1.4</i>	<i>1.6</i>
TAKINGS FROM ACCOMMODATION (\$'000)					
<i>December quarter 1994</i>	<i>155</i>	<i>77</i>	<i>32</i>	<i>113</i>	<i>377</i>
<i>1995—</i>					
October	35	21	6	21	83
November	41	39	9	29	118
December	57	54	12	37	160
<i>December quarter 1995</i>	<i>132</i>	<i>115</i>	<i>27</i>	<i>87</i>	<i>361</i>

TABLE 13. PASSENGER ARRIVALS AND DEPARTURES, TASMANIA,
INTERSTATE AND INTERNATIONAL (a)(d)
(Source: Tourism, Sport & Recreation)

Period	Arrivals			Total Departures (b)	Cruise Ships (c)		
	By air		By sea		Arrivals	Departures	
	Interstate	International					
1987	526,517	9,446	88,343	624,306	626,297	7,398	6,745
1988	571,344	8,625	101,572	681,541	683,635	5,497	6,161
1989	449,481	8,489	118,646	576,616	591,152	4,149	4,149
1990	555,631	8,629	120,004	684,264	679,833	3,255	3,255
1991	625,366	5,897	131,375	762,638	764,731	6,720	6,663
1992	652,092	4,428	114,969	771,489	761,109	4,608	4,608
1993	694,244	5,144	115,381	814,769	814,835	2,033	2,033
1994	745,508	4,166	128,644	878,318	880,936	6,592	6,592
1993-							
January	71,801	513	15,475	87,789	107,018	150	150
February	60,624	656	12,278	73,558	65,492	697	697
March	57,002	449	13,040	70,491	73,559	586	586
April	62,846	340	12,083	75,269	80,402	-	-
May	45,373	451	5,741	51,565	61,725	-	-
June	51,154	258	6,067	57,479	54,776	-	-
July	45,868	523	4,855	51,246	53,956	-	-
August	45,988	357	4,553	50,898	55,644	-	-
September	62,578	379	9,415	72,372	58,126	-	-
October	57,362	434	7,965	65,761	65,042	-	-
November	59,592	393	8,561	68,546	66,733	-	-
December	74,056	391	15,348	89,795	72,362	600	600
1994-							
January	73,470	473	12,536	86,479	103,610	1,596	1,596
February	63,506	413	12,324	76,243	69,690	2,470	2,470
March	66,848	414	13,054	80,316	85,030	1,064	1,064
April	62,519	502	11,732	74,753	78,095	-	-
May	50,076	242	8,151	58,469	70,924	-	-
June	52,737	167	7,629	60,533	56,244	-	-
July	52,995	186	6,983	60,164	63,737	-	-
August	50,447	250	7,199	57,896	61,996	-	-
September	69,099	340	13,430	82,869	66,659	-	-
October	61,361	422	11,466	73,249	71,846	980	980
November	63,701	338	10,707	74,746	73,918	482	482
December	78,749	419	13,433	92,601	79,187	-	-
1995-							
January	80,818	318	12,430	93,566	115,126	1,368	1,368
February	78,700	269	11,704	90,673	81,727	1,772	1,772
March	68,790	351	13,087	82,228	86,348	659	659
April	66,840	423	9,584	76,847	83,918	-	-
May	53,364	277	8,368	62,009	70,563	-	-
June	57,146	211	7,678	65,035	62,555	-	-

(a) The following persons are not included in these statistics : passengers under three years of age accompanied by an adult ; passengers travelling on chartered flights with minor carriers ; passengers travelling on private or VIP flights.

(b) The proportion of departing passengers who were visitors was shown to be about 58 per cent in the 1981 Tasmanian Visitor Survey, around 55 per cent in the 1984 TVS, about 53 per cent in the 1986 TVS, nearly 60 per cent in the 1988 TVS, close to 65 per cent in the 1990 TVS, almost 58 per cent in the 1991 TVS, almost 55 per cent in the 1992 TVS, just over 58 per cent in the 1993 TVS and almost 60 per cent in the 1994 TVS.

(c) Cruise ship statistics were not collected before November 1986 and are not included in Total Arrivals and Total Departures.

(d) The domestic airline pilots dispute commenced on 18 August 1989 with the pilots working restricted hours (9 a.m. to 5 p.m.). The pilots were suspended on 23 August 1989.

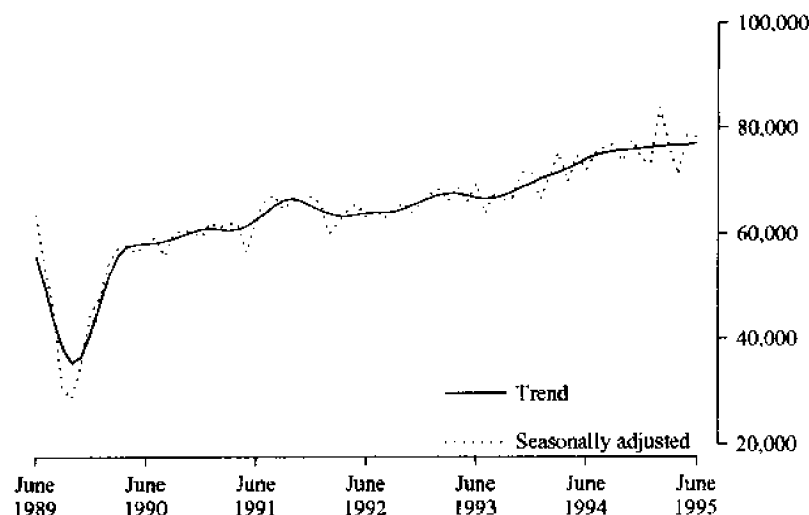
**TABLE 14. TOTAL PASSENGER ARRIVALS BY AIR AND SEA INTO TASMANIA :
SEASONALLY ADJUSTED AND TREND SERIES (a)(b)**

Period	Original	Seasonally adjusted (a)	Trend
December 1987	63,187	52,082	53,429
1988	68,809	57,058	56,003
1989	53,613	44,471	41,098
1990	73,421	59,307	60,865
1991	83,162	66,847	65,082
1992	82,262	65,418	65,953
1993	89,795	70,896	69,538
1994	92,601	73,654	75,796
1993-			
January	87,789	67,512	66,831
February	73,558	68,603	67,419
March	70,491	66,232	67,706
April	75,269	69,083	67,698
May	51,565	66,007	67,344
June	57,479	69,623	66,842
July	51,246	63,763	66,656
August	50,898	67,698	66,865
September	72,372	66,406	67,303
October	65,761	66,776	68,004
November	68,546	71,596	68,840
December	89,795	71,295	69,682
1994-			
January	86,479	66,597	70,439
February	76,243	70,738	71,031
March	80,316	75,352	71,636
April	74,753	69,708	72,374
May	58,469	74,763	73,233
June	60,533	72,016	74,142
July	60,164	75,259	74,934
August	57,896	76,522	75,355
September	82,869	77,162	75,601
October	73,249	73,562	75,854
November	74,746	77,860	76,035
December	92,601	74,050	76,229
1995-			
January	93,566	73,207	76,398
February	90,673	83,888	76,616
March	82,228	76,584	76,767
April	76,847	71,159	76,845
May	62,009	78,682	76,906
June	65,035	78,253	77,221

(a) There is an annual recalculation of seasonal adjustment factors to include the most recent year's arrivals. This occurs at the end of each financial year and may cause revisions to previously-published seasonally-adjusted and trend figures, as can be seen in Table 14. A full printout of seasonally-adjusted and trend series figures dating back to 1971 can be obtained through the publication officer for this publication (Eddie Oakford).

(b) The domestic airline dispute commenced on 18 August 1989 with the pilots working restricted hours (9 a.m. to 5 p.m.). The pilots were suspended on 23 August 1989.

TOTAL ARRIVALS IN TASMANIA



EXPLANATORY NOTES

INTRODUCTION

1 This publication contains data for Tasmania from a quarterly survey of tourist accommodation establishments.

SCOPE

2 Tourist accommodation establishments currently included in the survey comprise two groups:

- Establishments which provide predominantly short-term accommodation (i.e. for periods of less than 2 months) to the general public. These include:
 - *Hotels, motels and guest houses, with facilities* being hotels licensed to operate a public bar and motels, private hotels and guest houses all of which provide a bath (or shower) and toilet in most guest rooms and have breakfast available for guests. NOTE: From December quarter 1993, hotel, motel and guest house establishments with fewer than five rooms have been formally excluded from the scope of this statistical collection.
 - *Holiday flats, units and houses* (excluding establishments predominantly operated on a time share basis) which are operated by owners, managers or real estate agents who have sole letting rights to at least five flats, units or houses for short-term letting. They are mainly self-contained in terms of cooking, bath (or shower) and toilet facilities and do not have breakfast available for guests. Data for holiday flats, units and houses include short-term owner occupation as well as paying guest occupation.
 - *Visitor hostels* which provide accommodation to visitors on a bed basis (rather than by the room). This category does not include establishments providing charity type accommodation (e.g. Salvation Army hostels) nor hotels, motels and guest houses without in-room facilities which provide accommodation on a per room basis.
 - *Caravan parks* which provide either predominantly short-term (i.e. for periods of less than 2 months) or predominantly long-term (i.e. for periods of 2 months or more) accommodation to the general public and which provide powered sites for caravans and toilet, shower and laundry facilities for guests.

3 Data collected and published for each type of establishment (other than holiday flats, units and houses) include both long-term and short-term guests at these establishments.

4 Establishments which provide more than one type of accommodation (e.g. a motel with attached caravan park) are treated as two or more separate establishments. However, self-contained units, flats, cabins, etc. attached to hotels, motels or to caravan parks are included in the capacity for those establishments and not treated as separate holiday flat, unit or house establishments.

AUSTRALIAN STANDARD GEOGRAPHICAL CLASSIFICATION

5 Statistics presented in this publication have been classified according to the Australian Standard Geographic Classification (ASGC), Edition 2.5. This classification incorporates a number of hierarchic structures of geographic areas. The appropriate spatial units of the main structure of the ASGC used in this publication are defined as follows.

EXPLANATORY NOTES



AUSTRALIAN STANDARD
GEOGRAPHICAL CLASSIFICATION
continued

STATISTICAL LOCAL AREAS (SLAs) are legal Local Government Areas or parts thereof, which serve as the smallest type of spatial unit considered appropriate for the presentation of statistics and which add, without gaps or overlaps, to:

STATISTICAL SUBDIVISIONS (SSDs) which in turn represent another, higher hierarchic level and add, without gaps or overlaps, to;

STATISTICAL DIVISIONS (SDs) which in turn add, without gaps or overlaps, to:
Total Tasmania.

For more detailed information, refer to the ASGC (1216.0).

UNPUBLISHED STATISTICS

6 The ABS may make available on request certain unpublished tourist accommodation statistics. A charge may be made for this information.

RELATED PUBLICATIONS

7 Publications for Australia, and each State and Territory, are released by the respective offices of the ABS. Tourist accommodation statistics for past quarters are available on request. Other ABS publications which may be of interest include:

- *Directory of Tourism Statistics* (1130.0) (irregular: first and latest issue; 1991)
- *Overseas Arrivals and Departures, Australia* (3401.0) (monthly)
- *Tourism Indicators, Australia* (8634.0) (quarterly)
- *Tourism Accommodation, Australia* (8635.0) (quarterly)

8 Current publications produced by the ABS are listed in the *Catalogue of Publications and Products* (1101.0). The ABS also issues the *Release Advice* (1105.0) on Tuesdays and Fridays which lists publications to be released in the next few days. Both the *Catalogue* and *Release Advice* are available from any ABS office.

SYMBOLS AND OTHER USAGES

- n.a. not available
- n.p. not available for publication but included in totals where applicable
- r revised
- .. not applicable
- nil
- break in continuity of the series (where drawn across a column between two consecutive figures)

9 Where figures have been rounded, discrepancies may occur between totals and the sums of the component items.

GLOSSARY



- Average length of stay** Average length of stay is expressed in numbers of days and calculated:
- for hotels, motels and guest houses, by dividing *Guest nights* by *Guest arrivals* and
 - for holiday flats, units and houses, by dividing *Unit nights occupied* by *Unit lettings*.
- Bed spaces** Three-quarter beds are counted as one bed space; double beds as two bed spaces. Cots are excluded.
- Capacity** Capacity in terms of *Guest rooms*, *Bed spaces*, *Holiday units* or *Caravan park sites*, etc. is the maximum number available to accommodate paying guests during the survey period. Capacity closed temporarily for seasonal reasons is included.
- Caravan park capacity** The total number of *On-site vans*, *Other powered sites*, *Unpowered sites* and *Cabins*, etc.
- Employment** The number of persons working at accommodation establishments at the end of the survey period (including working proprietors and those working on other than accommodation activities).
- Establishments** For hotels, motels and guest houses, caravan parks and visitor hostels, the number of establishments within the scope of the survey which operated for any part of the survey period, or which closed temporarily for the quarter for seasonal reasons.
- Guest arrivals** The total number of paying guests counted only on the first night they stayed at the accommodation establishment.
- Letting entities** For holiday flats, units and houses, the number of owners, managers or real estate agents within the scope of the survey who operated for any part of the survey period.
- Occupancy** Occupancy in terms of *Room nights*, *Unit nights* or *Site nights occupied* refers to the total number of nights each guest room, holiday unit or caravan park site, etc. was occupied during the survey period. NOTE: From September quarter 1992, caravan park sites, etc. permanently reserved for 2 months or more at the end of the survey period but only casually occupied by their tenants have been recorded continuously as *Site nights occupied* irrespective of whether the tenants of individual sites were in residence on any particular night.
- Occupancy in terms of *Guest nights* refers to the total number of nights each paying guest stayed during the survey period.
- Occupancy rates** *Occupancy rates* represent occupancy expressed as a percentage of total capacity available during the survey period, e.g.

$$\text{Room occupancy rate (\%)} \text{ for the period} = \frac{\text{Room nights occupied}}{(\text{Guest rooms}) \times (\text{No. of days in the period})} \times 100$$

providing that, for establishments closing (other than for seasonal reasons) or opening during the survey period, the denominator of the above expression includes only operating periods.

GLOSSARY

.....

- Other sites permanently reserved** The total number of powered and unpowered sites, on-site vans and cabins, etc. continuously let for 2 months or more by the end of the survey period to tenants who occupy the sites only on a casual or sporadic basis. Separate data for this item are available only from September quarter 1992.
- Room nights available** The number of guest rooms available multiplied by the number of days for which they were available during the survey period. Including operating periods only for establishments closing (other than for seasonal reasons) or opening during the survey period.
- Sites occupied by long-term guests** The total number of sites, etc. occupied at the end of the survey period by guests who have stayed continuously for 2 months or more.
- Star grading** The grading of hotels and motels with facilities based on the classification system used by members of the Australian Automobile Association (AAA). The gradings are allocated according to a points system based on the amenities and facilities available to guests. Details of the grading scheme are contained in the RACV-RAASA members' publication *Accommodation Australia*, or the individual tour guides produced by members of the AAA. For the purpose of classifying establishments to a star grading in this publication, half star gradings are ignored (e.g. a two and a half star grading has been shown as two star).
- Takings from accommodation** Revenue received from the provision of accommodation. Takings from meals are excluded. Takings from accommodation for each month generally represent the takings received during that month. Where payments are received in advance of, or after, the provision of accommodation to guests, the monthly figure for takings from accommodation may not necessarily bear a direct relationship to the number of guests accommodated during the month. Rental and storage fees paid to caravan parks for the keeping of private vans in parks are included in the takings of the month they are received.
- Unit lettings** The total number of times a holiday flat, unit or house was occupied by a new tenant, counted only on the first night it was occupied by the new tenant.



FOR MORE INFORMATION . . .

The ABS publishes a wide range of information on Australia's economic and social conditions. A catalogue of publications and products is available from any of our offices (see below).

INFORMATION CONSULTANCY SERVICES

Information tailored to special needs of clients can be obtained from the Information Consultancy Service available at ABS Offices (see below).

ABS PRODUCTS

A large number of ABS products is available from the ABS Bookshops (see below). The ABS also provides a subscription service – you can telephone the ABS Subscription Service Australia wide toll free on 1800 0206 08.

ELECTRONIC SERVICES

A large range of data is available via on-line services, diskette, magnetic tape, tape cartridge and CD ROM. For more details about our electronic data services, contact any ABS office (see below) or email us at:

X.400

(C:Australia,PUB:Telememo.O:ABS.FN:STAT.SN:INFO)

Internet Stat.info@abs.telememo.au

Keylink STAT.INFO/ABS

You can visit us on the Internet at:

<http://www.statistics.gov.au>

GENERAL SALES AND INQUIRIES

- Sydney 02 268 4611 * Adelaide 08 237 7100
- Melbourne 03 9615 7755 * Hobart 002 20 5800
- Brisbane 07 3222 6351 * Darwin 089 43 2111
- Perth 09 360 5140 * Canberra 06 252 6627

- Information Services, ABS
PO Box 10, Belconnen ACT 2616



2863560012955

ISSN 0312-6900

RRP \$14.50

© Commonwealth of Australia 1996

Produced by the Australian Government Publishing Service